

November 2025

2024-2025

# Trustees Report



Adelaide Garden, June 2025



Friends of Waterloo  
Seafront Gardens

Registered Charity 1169385  
[contact@fowsg.co.uk](mailto:contact@fowsg.co.uk)



# TABLE OF CONTENTS

**3**

Who We Are

**5**

Potter's Barn

**6**

Marine Garden

**7**

Crescent  
Garden

**8**

Adelaide  
Garden

**9**

Beach Lawn  
Garden

**10**

Southport Flower  
Show

**11**

Impact

**13**

Accounts

**14**

Gratitude







Community Session, February 2025,  
Adelaide Garden

## Who we are

Friends of Waterloo Seafront Gardens help the local authority to care for the Waterloo Seafront Gardens - five separate spaces where the city meets the sea.

We want to maintain and restore the Gardens as an attractive and safe area for all ages and abilities to use for recreation and environmental wellbeing.

Website: <http://www.fowsg.co.uk/>



Winter, Marine Garden

## What we do

### Protecting

Maintaining the Gardens for the pleasure of local people through weekly volunteer sessions, include regular litter picking.

### Preserving

The weekly volunteer sessions include gardening activities where we renovate beds and the special features in our Gardens.

### Rebuilding

Fundraising to preserve the heritage of the Gardens through online donations second hand book and card sales and our annual Autumn Festival.



Friends of Waterloo  
Seafront Gardens

3

Registered Charity 1169385  
[contact@fowsg.co.uk](mailto:contact@fowsg.co.uk)





Friends of Waterloo  
Seafront Gardens

# Protecting our spaces

Marine Garden, April 2025

The Friends of Waterloo Seafront Gardens was set up in 2009 to help Sefton Metropolitan Borough Council look after the Waterloo Seafront Gardens. Since 2016, we have been a charity.





March 2025, Potter's Barn

## Potter's Barn

Potter's Barn is a lively park with great facilities for dog walkers and skaters alike. It is also a green lung by the main road. Unfortunately this year we sustained thefts of plants in the raised beds by the entrance to Crosby Road North. The committee has developed a funding bid to replace these plants and plant more bulbs in the woodland beds.



Daffodils, March 2025



Friends of Waterloo  
Seafront Gardens

5

Registered Charity 1169385  
[contact@fowsg.co.uk](mailto:contact@fowsg.co.uk)





Marine Garden, September 2025

## Marine Garden

Marine Garden - along with Crescent Garden – act as the two entry points for the Gardens from South Road. The Garden has a substantial rockery, bog garden and large lawned area. It also hosts our annual Autumn Festival.

This year we have continued to maintain the honeycomb paving at the base of the rockery. We had a fantastic team from BDO who worked on this area and made a great difference.



BDO, Marine Garden, September 2025



Friends of Waterloo  
Seafront Gardens

6

Registered Charity 1169385  
[contact@fowsg.co.uk](mailto:contact@fowsg.co.uk)





# Crescent Garden

As our largest Garden, there is always much to do in Crescent. In 2025 we have continued to clear back overgrown mats of grass to uncover the original 1930s edging.

Thank you to our members, volunteers and Crown Commercial Services who have continued to partner with us.

CCSs work over the last three years has really made a difference.



 Friends of Waterloo  
Seafront Gardens

Registered Charity 1169385  
[contact@fowsg.co.uk](mailto:contact@fowsg.co.uk)

The Team from Crown Commercial Services,  
Crescent Garden, June 2025



# Adelaide Garden



Before Clearance, Adelaide  
December 2023

Adelaide is one of our most elegant Gardens with a pleasing symmetry to it.

2025 has seen a lot of work in the Garden as our focus for this year.

We have cut back the overgrown edges of the lawn that was encroaching the paths, helped by volunteers from local schools.

The central bed has been replanted, replacing overgrown conifers with a biodiverse perennial planting scheme with shrubs.

We thank Lynne Webb for her kind donations.



After, Adelaide Garden, August 2025



Friends of Waterloo  
Seafront Gardens

8

Registered Charity 1169385  
[contact@fowsg.co.uk](mailto:contact@fowsg.co.uk)





Beach Lawn, Winter 2025



## Beach Lawn

We had a further set of action days in Beach Lawn to continue the work of clearing the invasive bulrushes which have taken over much of the area.

We have also worked on the ravine and rockery area to uncover stone ornamental areas along the path.



Beach Lawn, May 2025



Friends of Waterloo  
Seafront Gardens



Registered Charity 1169385  
[contact@fowsg.co.uk](mailto:contact@fowsg.co.uk)





## Southport Flower Show

We're proud to have made our debut at this year's Southport Flower Show with a raised bed display that exceeded expectations. Thanks to the Merseyside Civic Society for inviting us to showcase our horticultural skills at this prestigious event, and to Magill's Nursery for their sponsorship. Even without knowing exactly what to expect, we were told that we delivered an impressive display.

Our raised bed was a success—we were pleased with the result and we're already full of ideas for next year. Appearing at the Southport Flower Show is a big milestone for us as a community organisation. We care for the seafront gardens in Waterloo and regularly host volunteer gardening sessions and community events.



Friends of Waterloo  
Seafront Gardens

10

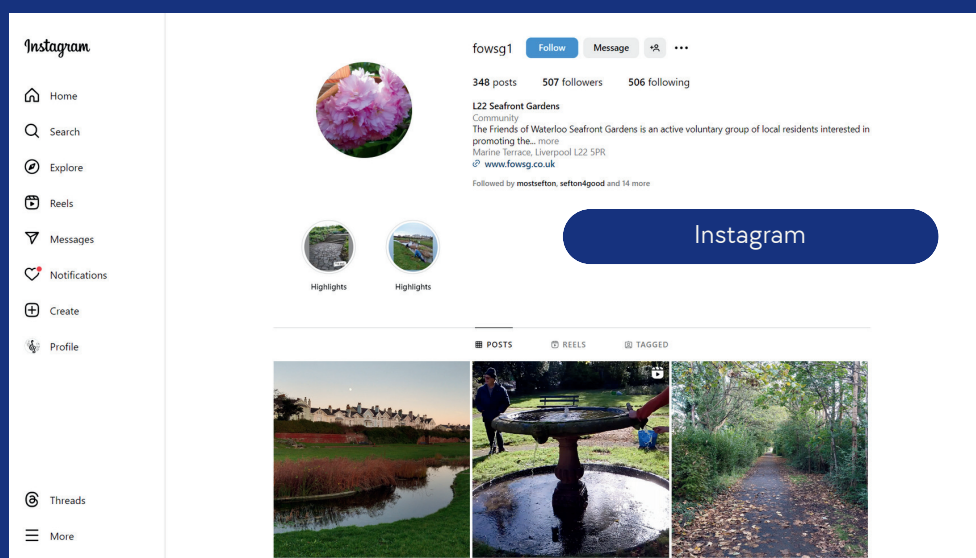
Registered Charity 1169385  
contact@fowsg.co.uk





Friends of Waterloo  
Seafront Gardens

Registered Charity 1169385  
[contact@fowsg.co.uk](mailto:contact@fowsg.co.uk)



## Our Impact

47,000

Our maximum monthly  
reach on Facebook

3112,

Facebook Followers

4

Social Media Accounts

The Friends continues to have a strong on-line presence. In addition to our web-site we have a number of active social media platforms.

Thanks to Karen Abram who manages our social media presence with great aplomb and to Malcolm Marriott of Barkeley Media for his help with the website



[www.fowsg.co.uk](http://www.fowsg.co.uk)



[@fowsg1](https://www.instagram.com/fowsg1)



[@fowsg1](https://twitter.com/fowsg1)



[@fowsg](https://www.tiktok.com/@fowsg)



[FriendsOfWaterlooSeafrontGardens](https://www.facebook.com/FriendsOfWaterlooSeafrontGardens)





Volunteers Cooling Down, May 2025

## Our Impact

**145 hours**  
**32 volunteers**

Litter Picking

**754 hours**  
**33 volunteers**

Gardening

"No act of kindness, no matter how small, is ever wasted."

Aesop's Fables *"The Lion & The Mouse"*

12



Ted, Canine Volunteer,  
March 2025





# Friends of Waterloo Seafront Gardens Accounts 01-September 2024 to 31-August-2025

Opening Balance at bank 01/09/2024

£9,536.55

## **INCOME**

### *Bank Income*

Local Giving	1222.34
Subscriptions and Memberships	251.23
Donation Posts	40.42
Book Sales	155.54
Theatre in the Gardens - Refreshments	48.30
Autumn Festival 2024 - PayPal Card Machine	233.34
Autumn Festival 2024 - Cash Takings	1570.30
Facebook Fundraiser	60.00
Autumn Festival 2025 - Stall Deposits	30.00
Donation - Claire Curtis-Thomas NGS	125.00
Debtors                None	0.00

## **INCOME**

£3,925.16

## **EXPENSES**

Festival Expenses 2024	1015.75
Plants & Bark	185.37
Gardening Equipment	129.18
Nature Sign Design - Interpretation Board	2,244.00
Volunteer Refreshments and Thanks	165.15
Public Liability Insurance	416.86
Merseyside Civic Society Annual Subscription	20.00
Fundraising Charges	180.00
HiViz Vests	247.59
External Services - Beach Lawn Pond	160.00
Volunteer and Publicity Posters and Flyers	134.88
Cash Payments    Creditors	0.00
Website Payments	67.07

## **EXPENDITURE**

£4,808.40

## **GAIN(LOSS)**

-£883.24

Closing Balance 31/08/2025

£8,653.31





## **Gratitude**

Members of FoWSG

Trustees of FoWSG

Crown Commercial Service

BDO

Liverpool Home Office Service and Support Centre

Sefton CVS

Sefton4Good

The Victoria Pub

DEFRA Plant Health Agency

Malcolm Marriott, Barkeley Media

Steven Garnett, Merseyside Civic Society

Green Sefton

Angela Griffiths, Green Sefton

George and David Howells

Lynne Webb

Kerry Pavey, Sefton Council

Tess Almond, Tony Almond Home & Garden,

52-54 South Road, Waterloo, L22 5PQ

Claire Magill, Magill's Nurseries,

Leasowe Rd, Wallasey, CH45 8LW



# Turn your daily shopping into everyday magic for us with easyfundraising

You shop, brands donate to us. It won't cost you any extra!



Help us make a difference when you shop.  
Visit [www.easyfundraising.org.uk](http://www.easyfundraising.org.uk)



1 Visit [www.easyfundraising.org.uk](http://www.easyfundraising.org.uk)

2 Sign up and search for us

3 Your favourite brands donate to us whenever you shop with them

Shop with 8,000+ brands including:

Booking.com

ebay

M&S

GROUPON



TUI

JOHN  
LEWIS



Viking

ASOS



Uber Eats





[www.fowsg.co.uk](http://www.fowsg.co.uk)



@fowsg1



@fowsg1



@fowsg



FriendsOfWaterlooSeafrontGardens